

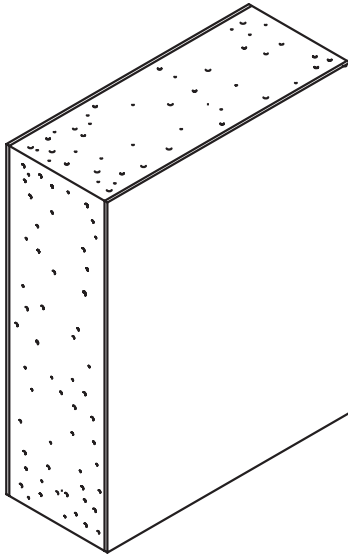
1-3/4" ENVOY DOOR

FLUSH STEEL DOORS
UNIVERSAL, NON-HANDED

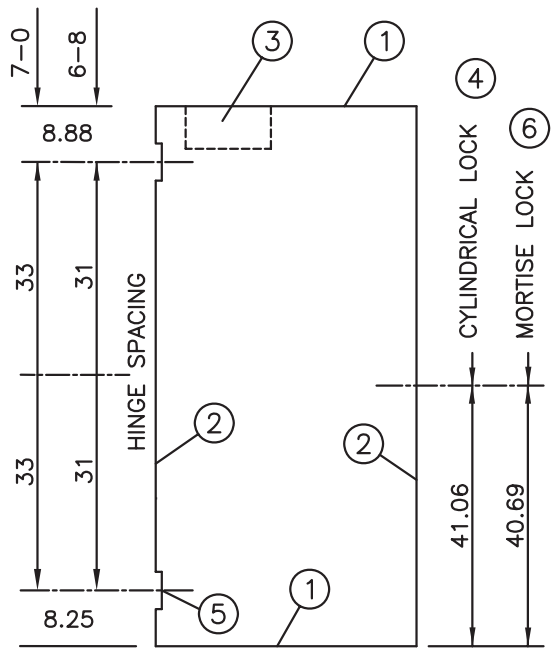
FACE SHEETS: 18 GA. C.R.S.
(GALVANNEALED OPTIONAL)
CORE: POLYSTYRENE
DESIGN: FLUSH
FIRE LABEL: 1-1/2 HOUR W.H.

SIZES AVAILABLE

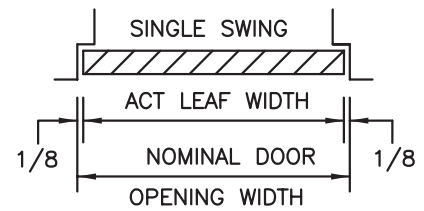
2668	2670
2868	2870
3068	3070
3468	3470
3668	3670



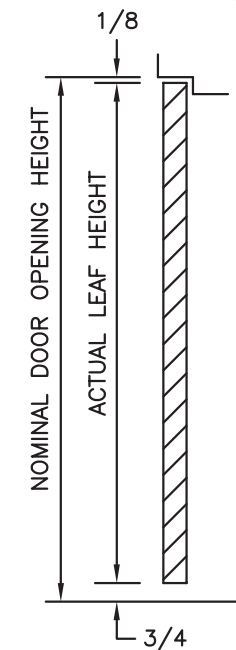
Hardware locations shown match Ceco standard frames.



DOOR ELEVATION



HORIZONTAL SECTION



VERTICAL SECTION

SDI/NAAMM hinge and lock locations available

①

16 GAGE STEEL
END CHANNELS

INVERTED TOP
AND BOTTOM

SNAP-IN FLUSH
TOP CAP
ON POLYSTYRENE
CORE

②

VERTICAL EDGES

MECHANICALLY
INTERLOCKED
HEMMED EDGES

Epoxy Seal

Hairline
Seam

③

CLOSER
REINFORCEMENT
STANDARD

16 GAGE STEEL
CHANNEL 20" LONG

④

LOCK PREPARATION
CYLINDRICAL TYPE
& LL3 LEVER
LOCK DESIGN

(ANSI A115.2)
2-3/4"
BACKSET

OPTIONAL
DEADLOCK PREPARATION @ 48" AFF ONLY (DB)

⑤

HINGE
PREPARATION

4-1/2" X .134"
HIGH, STANDARD
OR HEAVY WT.
FULL MORTISE
HINGE
PREPS

ANSI A156.7
TEMPLATE

NON-HANDED

10 GAGE
REINF.

CLOSURE
PLATES
INCLUDED

⑥

LOCK
PREPARATION
GOV. 86-4
MORTISE TYPE

(LM1) (ANSI A115.1)
2-3/4" BACKSET

(LM0) SIMILAR TO DETAIL
LESS FACE CUTOUT

(LP0) SIMILAR TO DETAIL
LESS ALL CUTOUTS
AND REINFORCEMENT

(PR1) SIMILAR TO DETAIL
LESS ALL CUTOUTS
REINFORCEMENT ON HINGE
AND LOCK SIDE (RIM EXIT)